

C R E S T

A topographic map of the Columbia River estuary region, showing the river's path from the mountains to the coast. The map is rendered in shades of tan and brown, with blue representing the water bodies. The text 'C R E S T' is overlaid in large blue letters at the top.

Restoration Program & Adaptive Management

Micah Russell, Director

Columbia River Estuary Study Taskforce

Who is CREST?

- **Council of Governments (b. 1974)**

Members: Port of Astoria, Wahkiakum Port Dist. #2, Port of Peninsula, Port of Ilwaco, City of Seaside, City of Warrenton, City of Astoria, City of Gearhart, City of Ilwaco, Clatsop County, Wahkiakum County, City of Cannon Beach

- **Mission Statement (2010 Strategic Plan):**

CREST provides locally-based, high quality environmental planning, habitat restoration and research services to the Columbia-Pacific Region.



CREST Restoration Program

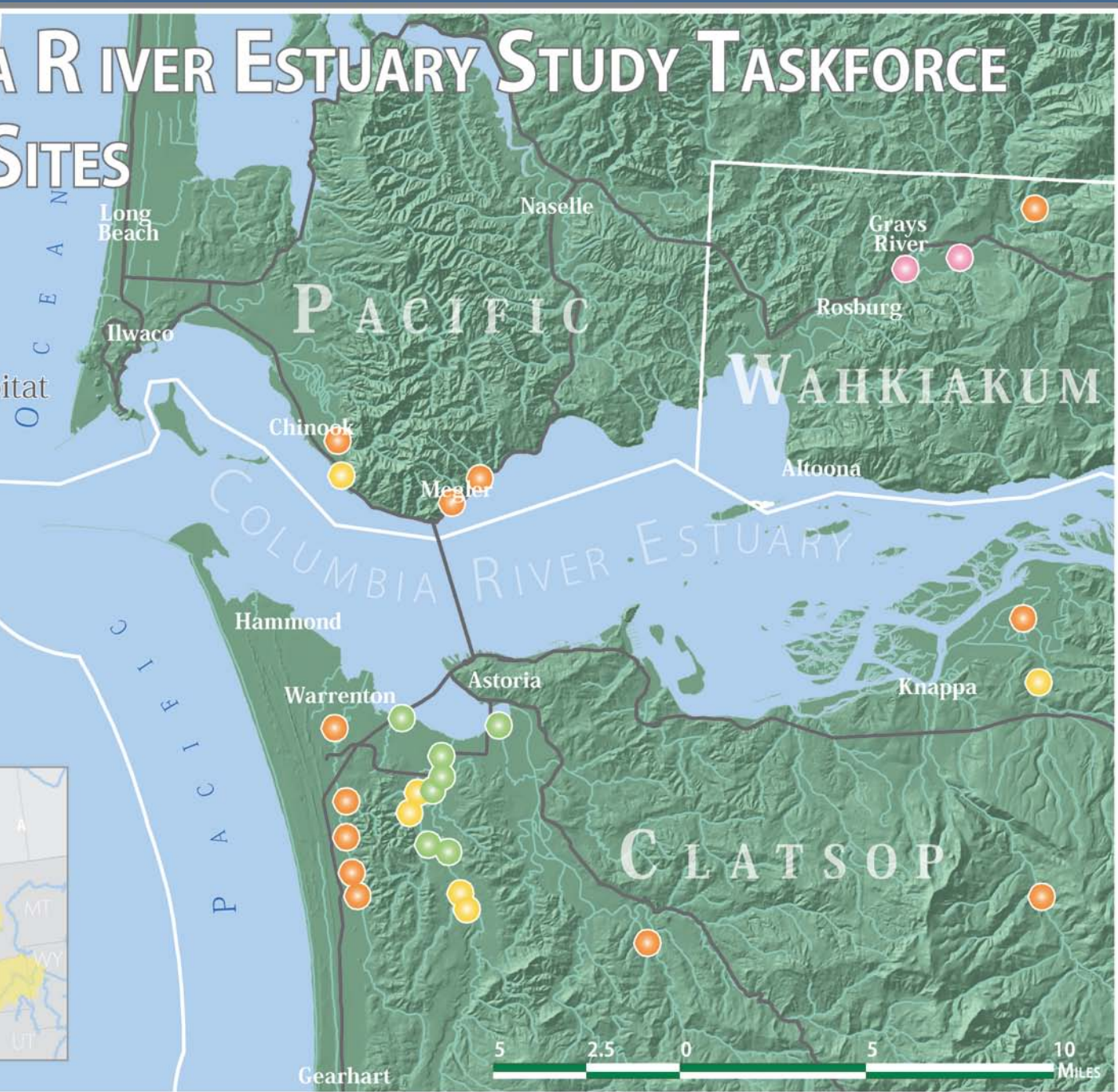
- Restore fish passage and juvenile salmon rearing habitat (dike breach, tidegate removal/retrofit, etc.)
- 10 Years implementation experience: project planning, management and monitoring
- Long-standing relationships in lower river communities
- Utilization of a variety of funding sources
- FCRPS BiOp implementation



COLUMBIA RIVER ESTUARY STUDY TASKFORCE

PROJECT SITES

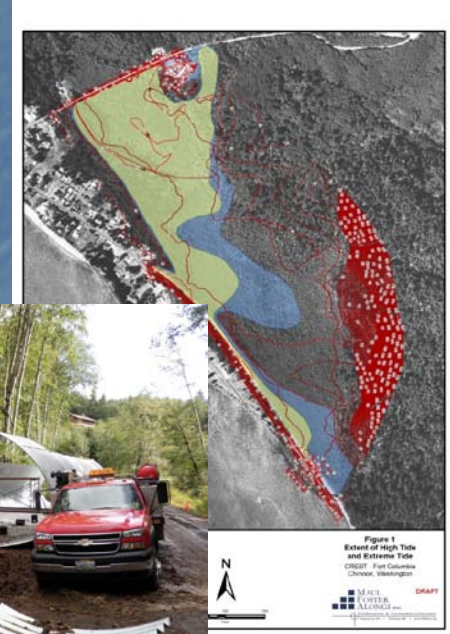
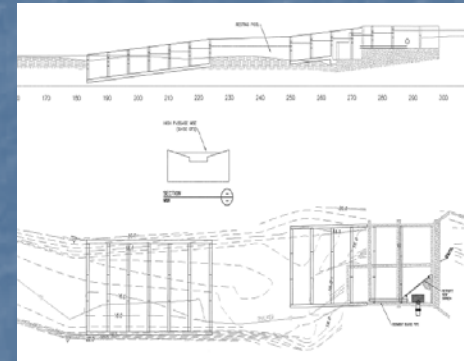
-  Fish Passage Improvement
-  In-Stream Habitat Restoration
-  Tidal Wetland Reconnection
-  Tide Gate Retrofit



Adaptive Management: Implementation

Practical lessons learned from:

- Project selection
- Landowner & community outreach
- Engineering designs
- Budgeting
- Permitting
- Sub-contracting & oversight
- On-the-ground management



Adaptive Management: Monitoring

- Fish community & landscape response

quantitative data → initial qualitative project evaluation

- Contributions to larger studies

e.g. ACOE Cumulative Effects, BPA/NOAA Historic Food Web Linkages, EP Meta-Analyses, etc.

- Infrastructure stability & maintenance



Where this leads...

Utilize prioritization tools, funding criteria, local knowledge of feasibility (technical and community) and lessons learned to yield:

- Improved project selection
- Improved community outreach
- Improved designs
- Improved implementation

Policy need: monitoring and adaptive management mandate and funding to participate

- Contact CREST directly:

503-325-0435

<http://www.columbiaestuary.org>

- Clatsop County watershed councils:

<http://www.clatsopwatersheds.org/>

Micah Russell, Director

mrussell@columbiaestuary.org

